

High Level Heritage Assessment for Rochford District of the Call for Sites submissions



Client:
Rochford Council

Date:
October 2020



High Level Heritage Assessment for Rochford District of the Call for Sites submissions

Project Details

Client: Rochford Council
Project Number: F1609
Address: Rochford District Council

Quality Assurance – Approval Status

Issue: 2
Date: 15-10-2020
Prepared By: Alison Bennett, Laura Johnson and Richard Havis
Checked By: Richard Havis
Approved By: Tim Murphy

Prepared by:

Place Services

Essex County Council
County Hall, Chelmsford, Essex CM1 1QH

T: +44 (0)333 013 6840
E: enquiries@placeservices.co.uk

www.placeservices.co.uk

[@PlaceServices](https://twitter.com/PlaceServices)

Disclaimer

This report has been prepared by Place Services with all reasonable skill, care and diligence within the terms of the Contract with the client, incorporation of our General Terms and Condition of Business and taking account of the resources devoted to us by agreement with the client.

We disclaim any responsibility to the client and others in respect of any matters outside the scope of the above.

This report is confidential to the client and we accept no responsibility of whatsoever nature to third parties to whom this report, or any part thereof, is made known. Any such party relies on the report at its own risk.

Copyright

This report may contain material that is non-Place Services copyright (e.g. Ordnance Survey, British Geological Survey, Historic England), or the intellectual property of third parties, which Place Services is able to provide for limited reproduction under the terms of our own copyright licences or permissions, but for which copyright itself is not transferable by Place Services. Users of this report remain bound by the conditions of the Copyright, Designs and Patents Act 1988 with regard to multiple copying and electronic dissemination of the report.

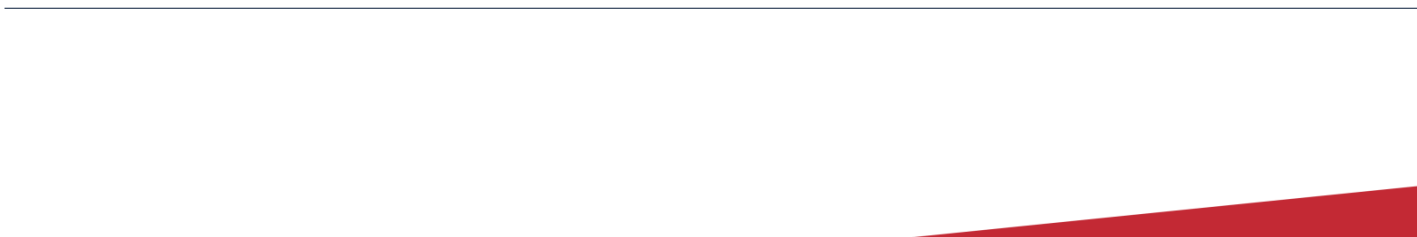
All OS maps reproduced by permission of Ordnance Survey® on behalf of the Controller of Her Majesty's Stationery Office. ©Crown Copyright. Licence number **LA100019602**

Maps reproduced from Historic Ordnance Survey material are with permission and are © and database right Crown Copyright and Landmark Information Group Ltd (All rights reserved 2010).

Contents

1. Introduction.....	5
2. Methodology	7

DRAFT



1. Introduction

This high level Heritage Assessment has been prepared by Place Services for Rochford District Council. This document provides an assessment of the heritage impact for 270 potential site allocations for the Rochford new Local Plan.

This report comprises a rapid desk-based assessment of all of the potential site allocations of the Local Plan, assessing the impact on both built heritage designated assets and archaeological sites.

For this assessment the built heritage assessment comprised a desk based assessment using a range of data including:

- the historic England National Heritage List for England (NHLE) which contains descriptions and plans of all of the designated assets within the District. The most numerous group was the listed buildings comprising grade I, II* and II within the District.
- The Historic Environment Record
- Conservation Area appraisals

For the assessment of archaeological sites, this comprise a desk based assessment using a range of data including

- the historic England National Heritage List for England (NHLE) which contains descriptions of the nationally significant archaeological assets protected as Scheduled Monuments within the District.
- The Essex Historic Environment Record which contains the most complete record of heritage assets within the county. This includes all known archaeological assets, recorded aerial photographic cropmark sites, earthworks, and results of archaeological fieldwork.
- Historic mapping, in the form of the Chapman and Andre maps of 1777 and the four editions of the Ordnance Survey from the 1870's through to the mid 1940's.

The assessment has resulted in two spreadsheets assessing the Archaeological impact and the historic designated built heritage impact included as appendices.

DRAFT

2. Methodology

The methodology outlined below has been used to assess the heritage impact of the Rochford Site allocations. Separate assessment have been undertaken for archaeological and built heritage assets with the same scoring method used for both.

Collation of data and creation of GIS project

The available data has been collated into a single GIS project. All designated heritage assets were added to this project along with other information such as the Historic Environment Record, conservation area boundaries, protected lanes, aerial photographic data etc. This was undertaken to see all of the heritage data which may be impacted by a potential Site.

Completion of assessment for each potential allocation site

Using the GIS data, each allocation site has been assessed to identify the potential impact on designated built heritage assets and separately on archaeological sites recorded on the Historic Environment Record.

Due to the quantity of sites at this stage there has been no detailed consideration given on a site by site basis to potential mitigation or design possibilities to allow for the preservation or enhancement of the heritage assets or their setting.

Provide a score using an agreed table in the form of a RAG system

The impact of development on heritage assets has been assessed using a RAG style scoring system which provides an indication of level of harm identified separately for built heritage and archaeological impact. These scores have been inputted onto an excel spreadsheet to facilitate incorporation into the overall Rochford Local Plan assessment. This data has also been created as shapefiles if required.

The level of impact scores has been taken from the table below which has been used on a number of recent projects. This provides an indication of the level of harm likely to occur if the allocation site is taken forward into the local plan.

Impact	Description
Major Beneficial	The development of this site will have a major beneficial effect upon the significance of a heritage asset (s), or its optimum viable and sustainable use. Development resulting in these effects should be encouraged and supported.
Moderate Beneficial	The development of this site will have a moderate beneficial effect upon the significance of a heritage asset (s), or its optimum viable and sustainable use. Development resulting in these effects should be supported.
Minor Beneficial	The development of this site will have a minor beneficial effect upon the significance of a heritage asset (s), or its optimum viable and sustainable use. Development resulting in these effects should be supported.
Neutral	The development of this site will have no impact on the heritage asset and its significance. It may also be the circumstance that any identified harm can be neutralised through mitigation.
Minor Adverse	The development of this site will cause less than substantial harm to a heritage asset (s). There may be options, through mitigation, to reduce this harm.
Moderate Adverse	The development of this site will cause less than substantial harm to a heritage asset (s) and this harm is considerable. There are likely no options for mitigation. Proposals causing this level of harm to the significance of a heritage asset (s) should be avoided.
Major Adverse	The development of this site will cause substantial harm to a heritage asset (s). There are likely no options for mitigation. Proposals causing this level of harm to the significance of a heritage asset (s) should be avoided.

Results

The results have been provided in the form of two excel tables detailing the assessed impact on each of the potential site allocation based on the level of impact identified above (see appendices 1 and 2). Two figures are also provided with this report showing the results across the District. Shapefiles of this can be provided on request.

The vast majority of sites fall within the categories identified above. However, in a very small number of cases, mainly within urban areas a range of scores have been

given. This is a result of the sites lie within a highly sensitive heritage area (such as a conservation area) and could be highly detrimental to the existing heritage assets, however, the nature of the existing site and its use indicates that a sensitive development on the site has the potential to be beneficial to the heritage assets in the vicinity.

A considerable number of the proposed allocations impact the setting of designated assets. Although the proposed sites have skirted around the assets by changing their setting there will be a significant impact on the assets. This is especially the case for the number of designated farm complexes, or farm houses which have been left as small areas of land largely confined to the property and its immediate garden area with thno consideration of the setting of the designated assets that are appreciated in a rural landscape.

For clarity within the comments section of the excel table the historic built designated assets have their national list numbers recorded.

There are cases within the archaeological assessment where there are known heritage assets, such as the historic deer park at Rayleigh, which cover large areas, containing a number of proposed allocation sites. These may or may not impact archaeological deposits associated to the deer park and have been identified as neutral as there would be no heritage grounds to stop development, although they would potentially require planning conditions. Details of the known archaeology is given in the notes within the excel table.

Note.

As discussed at the start of this project this work has comprised a rapid assessment of the heritage impact of the proposed allocation sites to be included within the overall Rochford assessment. The work undertaken does not comprise a full heritage impact assessment of each of the sites and we would advise a further phase of assessment is undertaken once a final selection of sites has been made.

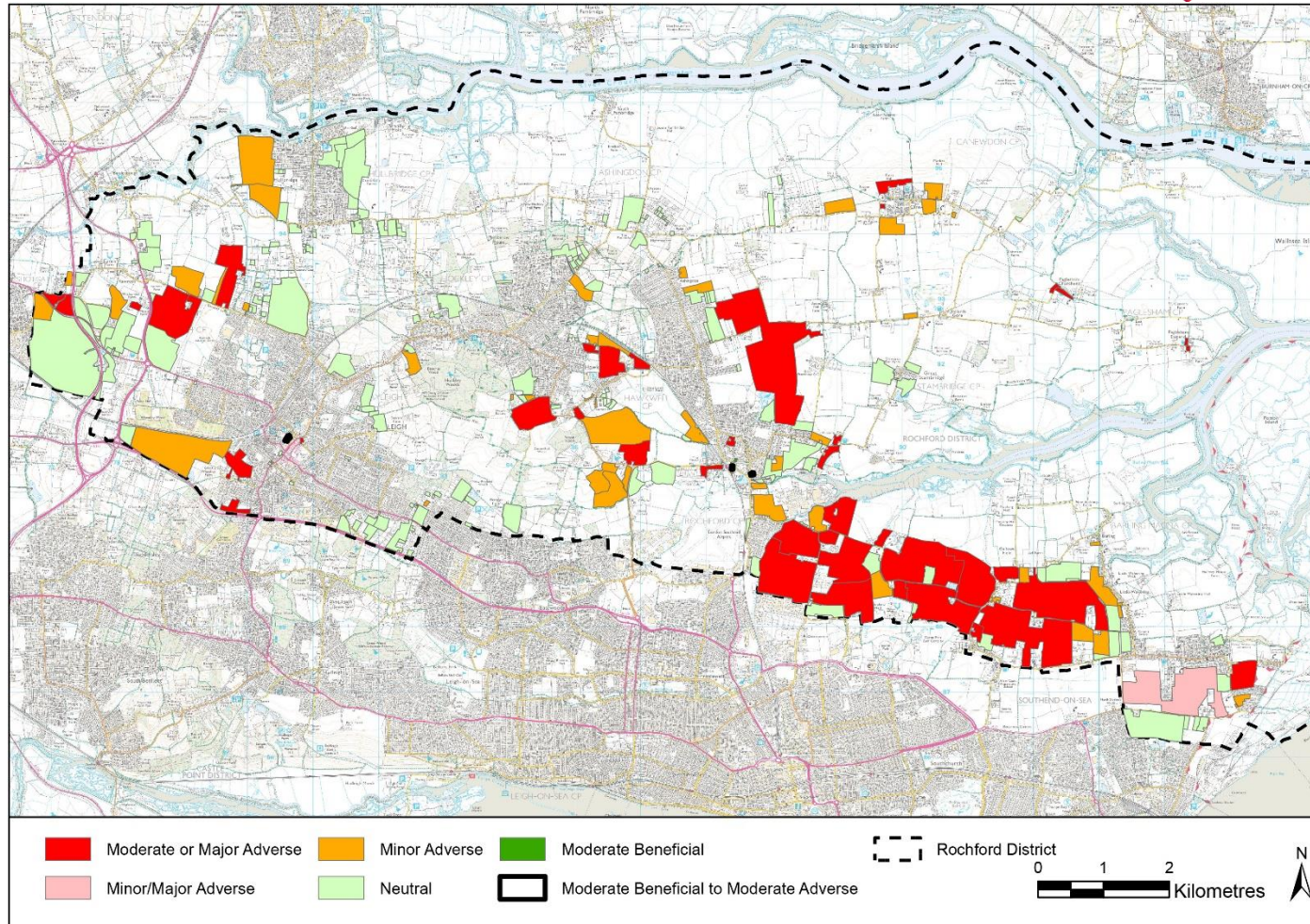


Fig 1 Historic Built assessment RAG scoring

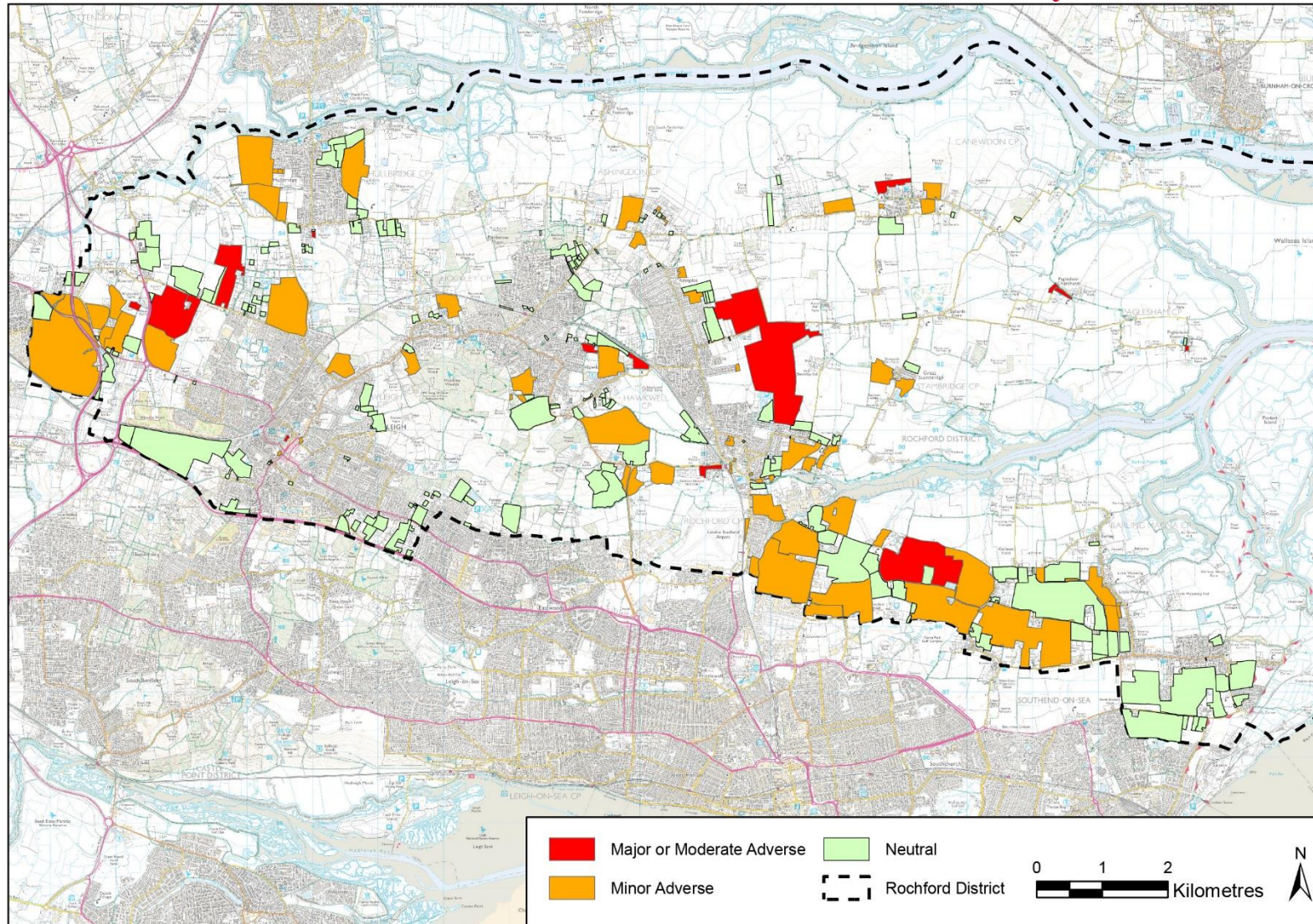


Fig. 2 Archaeological assessment RAG scoring Appendix 1

Historic Built heritage assessment

SHLAA_Ref	Address	Text	Comment
CFS260A	Land North of Bournes Green Chase	Minor adverse	No designated assets in the site, the setting of GII Abbots Hall Farmhouse [1112654] may be affected
CFS260B	Land North of Bournes Green Chase	Moderate Adverse	The southern part of the site will impact two designated assets (Pear Tree Cottage, Grade II [1322378] and Vine Cottages GII [112650] with potential impacts on the complex of buildings at Beauchamps Farm (GII* Farmhouse, [1112579], GII outbuilding [1113352] and GII walls [1168449])
CFS260C	Land North of Bournes Green Chase	Moderate Adverse	The southern part of the site will impact two designated assets: Blue House, GII [1112651] and Walkers Farmhouse, GII [1322379]
CFS260D	Land North of Bournes Green Chase	Neutral	Opposite side of road and immediately to church complex, Abbots Hall Farmhouse [1112654]
CFS260F	Land North of Bournes Green Chase	Neutral	No designated assets in the vicinity
CFS260G	Land North of Bournes Green Chase	Neutral	No designated assets in the vicinity
CFS260H	Land North of Bournes Green Chase	Major Adverse	Allocation encircles Beauchamps (GII* Farmhouse [1112579] GII outbuilding [113352], GII walls [1168449])
CFS260I	Land North of Bournes Green Chase	Major Adverse	Allocation encircles Clay Street Farmhouse, GII [1322371]
CFS260J	Land North of Bournes Green Chase	Minor adverse	Limited impact to GII Blue House [1112651] is to the south west of the allocation site. The setting of GII Walkers Farmhouse [1322379] should also be considered.
CFS260K	Land North of Bournes Green Chase	Major Adverse	Harm to 5 separate listed buildings including 3 farms all designated (1222378 1112650, Clay Street Farm [1322371], Barrow Hall Farmhouse GII [1112600], Vine Cottages GII [1112650], **what about Pear Tree Cottages GII, near to Vine [1322378], Walkers Farmhouse [1322379]
CFS260L	Land North of Bournes Green Chase	Neutral	No designated assets in the vicinity.
CFS260M	Land North of Bournes Green Chase	Minor Adverse	No designated assets in the site. There is the potential to harm the setting of GII Abbots Hall [1112654] dependent on building heights.
CFS260N	Land North of Bournes Green Chase	Neutral	No designated assets in the vicinity.
CFS260O	Land North of Bournes Green Chase	Neutral	No designated assets in the vicinity.
CFS260T	Land North of Bournes Green Chase	Major Adverse	Allocation encircles Abbots Hall Farm, GII [1112654] and lies directly to the north of Barrow Hall Farm GII [1112600], developing the site will connect the two, harming their setting.

CFS260W	Land North of Bournes Green Chase	Moderate Adverse	Allocation impacts Sutton Hall Church and Hall complex (GII* All Saints Church [1113355] and GII Sutton Hall [1321993]) and New Hall Farm, GII [1113354]. There may be potential to develop the western side of site.
CFS260X	Land North of Bournes Green Chase	Minor Adverse	Allocation impacts New Hall Farm (1113354). Potential to develop western side of site with a large buffer around New Hall Farm.
CFS260Y	Land North of Bournes Green Chase	Neutral	No designated assets in the vicinity.
CFS260Z	Land North of Bournes Green Chase	Minor Adverse	No designated assets in the vicinity. Care will be needed on the design of the eastern edge due to potential impact on Shopland Hall (GII Barn [1113358], GII Farmhouse [1321992]).
CFS260AA	Land North of Bournes Green Chase	Neutral	No designated assets in the vicinity.
CFS260AB	Land North of Bournes Green Chase	Neutral	No designated assets in the vicinity.
CFS260AC	Land North of Bournes Green Chase	Moderate Adverse	Allocation impacts Sutton Hall Church and Hall complex (GII* All Saints Church [1113355] and GII Sutton Hall [1321993]) and New Hall Farm, GII [1113354]. Some potential for development in the southern part of the allocation.
CFS260AD	Land North of Bournes Green Chase	Moderate Adverse	Allocation impacts setting of Butlers Farm (GII Farmhouse [1322416], GII Barn [1168446], moated site). Potential to develop southern part of site.
CFS260AE	Land North of Bournes Green Chase	Minor Adverse	No designated assets in the site. Care will be needed on the design of the southern edge due to impact on GII Shopland Hall [1113358].
CFS260AF	Land North of Bournes Green Chase	Moderate Adverse	No designated assets in the site. Care will be needed on the design of the southern edge due to impact on GII Shopland Hall [1113358].
CFS260AG	Land North of Bournes Green Chase	Major Adverse	Allocation impacts Sutton Hall Church and Hall complex (GII* All Saints Church [1113355] and GII Sutton Hall [1321993]).
CFS260AH	Land North of Bournes Green Chase	Moderate Adverse	Allocation impacts setting of Butlers Farm (GII Farmhouse [1322416], GII Barn [1168446], moated site with high archaeological potential). The north western corner is highly sensitive and there is a further sequence of listed buildings set some way to the south of the site. There is potential for the development of the eastern side of the wood, yet this would likely affect Butlers Farm.
CFS260AI	Land North of Bournes Green Chase	Major Adverse	Fleet Hall, GII listed building [1307013] in centre of allocation.
CFS260AK	Land North of Bournes Green Chase	Neutral	No designated assets in the immediate vicinity. Care will be needed on the design of the eastern edge due to potential impact on Shopland Hall (GII Barn [1113358] and GII headstones [1321992]).



CFS261	Land east of Oxford Road, Rochford	Major Adverse	There will be a significant impact upon the major complex of designated buildings at Doggetts Farm which includes 7x GII and 1 x GII* buildings (Farmhouse is GII [1147913], the GII* building is a barn at the southern side of the site [1322417]). The site also impacts setting of Little Stambridge Hall (contains 4xGII buildings, including the Farmhouse [1112574]).
CFS172	Land At Cracknells Farm, Hullbridge	Neutral	No designated assets in the vicinity.
CFS173	Takeley, Creeksea Ferry Road, Canewdon	Neutral	No designated assets in the vicinity.
CFS177	Land at Beeches Farm, Rawreth	Neutral	No designated assets in the vicinity.
CFS178	Rear of Rutland, The Drive, Rayleigh	Neutral	No designated assets in the vicinity.
CFS180	Land East of Highcliff Crescent, Ashingdon	Minor Adverse	Lies to the south of the GII* Church of St Andrew [1112648] and will potentially impact its setting, including views out of and toward the church.
CFS181	The Stables, Ethel Road, Rayleigh	Minor Adverse	GII Eastwood Lodge [1306922] is to the east of the site and its setting must be considered. There will, however, be very limited intervisibility between the two (LB surrounded by houses).
CFS182	High Gables, Rayleigh Downs Road, Rayleigh	Neutral	No designated assets in the vicinity.
CFS187	Land north of Arundel Road, Ashingdon	Neutral	No designated assets in the vicinity.
CFS188	Land btwn Ellesmere & Ethelbert Rd, Ashingdon	Neutral	No designated assets in the vicinity.
CFS190	Land south of Pooles Lane, Hullbridge	Neutral	No designated assets in the vicinity.
CFS191	Land at Mount Bovers Lane, Hawkwell	Minor Adverse	No designated assets in the site, however it is located on the approach to GII Mount Bovers Farm [1112701]. Careful planning and assessment could mitigate any harm.
CFS192	Land west of Little Waking Road, L. Waking	Minor Adverse	The south eastern part of the site has the potential to impact the setting of the core of Little Waking, which includes a number of listed buildings including GII* St Mary's Church [1322342].
CFS193	Land south of Pooles Lane, Hullbridge	Neutral	No designated assets in the vicinity.
CFS194	Land north of Rectory Road, Hawkwell	Moderate Adverse	Immediately adjacent GII Clements Hall [1112662] and its associated gardens. There may be potential to develop southern half of site, below the footpath.
CFS195	Land at New House Farm, G. Waking	Neutral	No designated assets in the vicinity.
CFS197	Land r/o 185 Greensward Lane, Hockley	Neutral	No designated assets in the vicinity - 1397292 no longer exists.
CFS198	Land at 195 Greensward Lane, Hockley	Neutral	No designated assets in the vicinity - 1397292 no longer exists.



CFS199	Land r/o 155 Greensward Lane, Hockley	Neutral	No designated assets in the vicinity - 1397292 no longer exists.
CFS201	Land adj 41-45 Crouch View Crescent, Hockley, Esse	Neutral	No designated assets in the vicinity - 1397292 no longer exists.
CFS204	Land at / r/o 139 Greensward Lane, Hockley, Essex	Neutral	No designated assets in the vicinity - 1397292 no longer exists.
CFS206	159 Greensward Lane, Hockley, SS5 5JH	Neutral	No designated assets in the vicinity - 1397292 no longer exists.
CFS207	1 Disraeli Road, Rayleigh, Essex, SS6 8XP	Neutral	No designated assets in the vicinity.
CFS212	Land at Rayleigh Downs Rd & Arterial Rd, Rayleigh	Neutral	No designated assets in the vicinity.
CFS213	Site on Apton Hall Road, Ballards Gore Golf Club	Minor Adverse	GII Halesville Cottage [1147518] and GII Breade House [116870] are outlying houses that would be subsumed into a hamlet, their setting must be considered.
CFS216	Land at Fambridge Road, Ashingdon	Neutral	No designated assets in the vicinity.
CFS217	Land at Doggetts Chase, Rochford	Neutral	No designated assets in the vicinity.
CFS218	Land at Oxford Road, Rochford	Neutral	Natural extension to cul-de-sac, there will be very little impact on Doggetts Farm Complex (8 x designated heritage assets) to the east.
CFS219	Ivanhoe, Ironwell Lane, Hockley, Essex, SS5 4JY	Neutral	No designated assets in the vicinity.
CFS220, CFS031	Land at Rawreth Lane, Rayleigh	Neutral	No designated assets in the vicinity.
CFS221	Hollowdene, Hooley Drive, Rayleigh, SS6 9RA	Neutral	No designated assets in the vicinity.
CFS222	Land at Dollymans Farm, Doublegate Lane, Rawreth,	Neutral	No designated assets in the vicinity. NB: there are potentially non-designated heritage assets in the site, Dollymans Farm and Peverals Barn, which will need to be assessed.
CFS223	Land at Dollymans Farm, Doublegate Lane, Rawreth,	Moderate Adverse	The setting of GII Shotgate Farm [1147882] will be impacted.
CFS224	Land at Dollymans Farm, Doublegate Lane, Rawreth,	Minor Adverse	The setting of Shot Farm (GII Barn [1170786], GII Farmhouse [1338410]) will need to be considered in any development, however, there is dense scrub/woodland between the site and the designated assets. The GII milestone [1112674] will not be affected.
CFS225	Land at Dollymans Farm, Doublegate Lane, Rawreth,	Neutral	The setting of Shot Farm (GII Barn [1170786], GII Farmhouse [1338410]) will need to be considered in any development, however, there is dense scrub/woodland between the site and the designated assets.

CFS226	Land at Dollymans Farm, Doublegate Lane, Rawreth,	Neutral	GII listed Milestone [1112674] is located directly to the north of the allocation, but there will be little to no impact to this.
CFS227	Land at Dollymans Farm, Doublegate Lane, Rawreth,	Neutral	No designated assets in the vicinity.
CFS228	Land at Dollymans Farm, Doublegate Lane, Rawreth,	Neutral	No designated assets in the vicinity.
CFS229	Land at Dollymans Farm, Doublegate Lane, Rawreth,	Minor Adverse	The setting of GII Witherden's Farm [1147868] will need to be considered in design. Moat Farm to the south needs to be assessed as a potential non-designated heritage asset, likely lots of archaeology in the vicinity.
CFS230	Land at Dollymans Farm, Doublegate Lane, Rawreth,	Neutral	No designated assets in the vicinity.
CFS231	Land at Dollymans Farm, Doublegate Lane, Rawreth,	Neutral	No designated assets in the vicinity.
CFS232	Land at Dollymans Farm, Doublegate Lane, Rawreth,	Neutral	No designated assets in the vicinity.
CFS233	Land at Battlesbridge Nursery, Chelmsford Road, Es	Neutral	No designated assets in the vicinity.
CFS234	Appledore, Wadham Park Avenue, Hockley, SS5 6AL	Neutral	No designated assets in the vicinity.
CFS236	Land at New Park Road, Hockley, Essex, SS5 5JX	Neutral	No designated assets in the vicinity.
CFS237	La Mare, Wadham Park Avenue, Hockley, SS5 6AL	Neutral	No designated assets in the vicinity.
CFS238	Shotgate Farm, London Road, Wickford (North)	Major Adverse	Designated asset of Shotgate Farm (GII, [1147882]) is in the centre of the allocation.
CFS239	Shotgate Farm, London Road, Wickford (South)	Minor Adverse	The setting of GII Shotgate Farm [1147882] to east will need to be considered in any design due to potential inter visibility.
CFS240	Old Parsonage, Ironwell Lane, Hawkwell, Essex, SS5	Neutral	No designated assets in the vicinity.
CFS242	47 Victor Gardens, Hockley, SS5 4DS	Neutral	No designated assets in the vicinity.
CFS243-246	Land south of Vanderbilt Avenue (Section B)	Neutral	No designated assets in the vicinity.
CFS247	Land east of Hooley Drive, Rayleigh (Section B)	Neutral	No designated assets in the vicinity.
CFS248-249	Land east of Hooley Drive, Rayleigh (Section A)	Neutral	No designated assets in the vicinity.

CFS250	Land at Rayleigh Downs Road, Rayleigh, Essex, SS6	Neutral	No designated assets in the vicinity.
CFS251	Land at Peartree Cottage, Holyoak Lane, Hockley	Minor Adverse	A landscaping study needs to take into account the GII Mount Bovers Farmhouse [1112701] to the south, which may be visible from the site.
CFS255	Land at North Side of Ironwell Lane, Rochford	Neutral	No designated assets in the vicinity.
CFS256	Land north of Daws Heath Road and A127, Rayleigh	Neutral	No designated assets in the vicinity.
CFS257	Land Adjacent to 130 Shoebury Road, Shoebury Road,	Minor Adverse	GII 130-6 Shoebury Road [1147839] is immediately to the south of the allocation site, the setting of which will be affected.
CFS258	Site at Little Wakering Road, Little Wakering	Minor Adverse	Very close to the historic core of Little Wakering and the complex of designated assets around the GII* Church of St Mary the Virgin [1147397], the setting of which may be affected dependent on the scale of development.
CFS259	Land at Homefield Farm, Greensward Lane, Hockley	Neutral	No designated assets in the vicinity.
CFS262	Land at Rawal Pindi Nurseries, Hawkwell	Neutral	No designated assets in the vicinity.
CFS001	Rayleigh Garden Centre, Eastwood Road, Rayleigh	Neutral	No designated assets in the vicinity.
CFS002	Land b/t Rectory Rd and Hall Road, Hawkwell	Moderate Adverse	To the west lies GII Potash Cottage [1168224] and to the east GII The Old Rectory [1322324], the setting of each building will be impacted.
CFS004	Land in Little Wakering Road, Barling	Minor adverse	Immediately to the east lies Ruckin Farmhouse (1112628) whose setting and outlook will be impacted.
CFS003	Land at jtn The Drive and Disraeli Rd, Rayleigh	Neutral	No designated assets in the vicinity.
CFS005	Plot 13, South west side of London Rd, Rawreth	Neutral	No designated assets in the vicinity.
CFS006	Lane Field, Watery Lane, Hullbridge	Neutral	No designated assets in the vicinity.
CFS007	Rear of Golden Cross Road, Ashingdon	Neutral	No designated assets in the vicinity.
CFS008	Land at The Chase, Ashingdon	Neutral	No designated assets in the vicinity.
CFS010	Roverdene, Ellesmere Road, Ashingdon	Neutral	No designated assets in the vicinity.

CFS011	Land b/t Victoria Dr, Seaview Dr Gt Wakering	Minor Adverse	On opposite side of road and immediately to S is 130-6 Shoebury Road, GII [1147839], which must be taken into consideration.
CFS012	Land East of bend, Gardiners Lane, Canewdon	Minor Adverse	Potential impact on the setting of GII Gardeners [1112629] to the south west.
CFS013	Land at rear of Newton Hall Gardens, Ashingdon	Neutral	No designated assets in the vicinity.
CFS014	Land opposite 1 to 10 Disraeli Road, Rayleigh	Neutral	No designated assets in the vicinity.
CFS015	Land SE of Lower Rd&Hullbridge Rd jtn, Hullbridge	Neutral	No designated assets in the vicinity.
CFS016	Tyndol, Chelmsford Road, Rawreth	Neutral	No designated assets in the vicinity.
CFS017	Greenacres, Victor Gardens, Hawkwell	Moderate Adverse	The allocation lies immediately to the west of GII Clements Hall [1112662] and within the historic park/gardens of the designated asset.
CFS018	Land b/t The Grange & Red Roof, Ironwell Lane	Neutral	No designated assets in the vicinity.
CFS019	Land adj to Newhall Road and Lower Road, Hockley	Neutral	No designated assets in the vicinity.
CFS020	Land r/o St Marys Church, Rectory Rd, Hawkwell	Moderate Adverse	The allocation will impact the setting of St Mary the Virgin church (GII tombstones [1112702], GII* Church [1322323]). It would be possible to develop the very northern part of the site.
CFS021	Land b/t Cynara&Holmfield, Canewdon Rd, Ashingdon	Neutral	No designated assets in the vicinity.
CFS022	Meadowbrook Farm, Ironwell Lane, Rochford	Minor Adverse	Located a fair distance but along one of the routes in to the Rochford Conservation Area which should be considered.
CFS023	Land north and east of Malvern Road, Hockley	Neutral	No designated assets in the vicinity.
CFS024	Land north of Merryfields Avenue, Hockley	Neutral	No designated assets in the vicinity.
CFS025	Land south of Montefiore Avenue, Rayleigh	Neutral	No designated assets in the vicinity.
CFS026	Land east side of Kingsway, Hullbridge	Neutral	No designated assets in the vicinity.
CFS027	Land north of Bull Lane, Rayleigh	Neutral	No designated assets in the vicinity.
CFS028	Land adjacent to Brayside, Brays Lane, Rochford	Neutral	No designated assets in the vicinity.

CFS029	Land at Turrett Farm, Napier Road, Rayleigh	Neutral	No designated assets in the vicinity.
CFS031	Land n of Rawreth Ln&e of Parkhurst Dr, Rayleigh	Neutral	No designated assets in the vicinity.
CFS032	Land west of Pudsey Hall Lane, Canewdon	Neutral	No designated assets in the vicinity.
CFS033	Land south of Pooles Lane, Hullbridge	Neutral	No designated assets in the vicinity.
CFS034	Land adj Newhouse Farm, Poynters Ln, Gt Wakering	Neutral	No designated assets in the vicinity.
CFS035	Land w & n of Rochford Hall, Hall Rd, Rochford	Major Adverse	Immediately adjacent to Rochford Hall, (GI House/Ruins [1112586], GI wall [1307122] SAM 1002200), and within Rochford Conservation Area.
CFS036	Land adj to Rectory Terrace, Rectory Rd, Hawkwell	Neutral	No designated assets in the vicinity.
CFS037	The Ramblers & Dahlia Lodge, Eastwood Rise, Leigh	Neutral	No designated assets in the vicinity.
CFS038	Plots 138/139/140, Lyndhurst Rd, Ashingdon	Neutral	No designated assets in the vicinity.
CFS039	Plots 1/2/3 New Hall Estate, Greensward Ln, Hockley	Neutral	No designated assets in the vicinity.
CFS040	Eastview House & Haslemere, Church Road, Hockley	Neutral	No designated assets in the vicinity.
CFS041	La Vallee Farm, Lower Road, Hockley	Neutral	No designated assets in the vicinity.
CFS042	Tower Farm, Lower Road, Hullbridge	Neutral	No designated assets in the vicinity.
CFS043	Bolt Hall Farm, Lark Hill Road, Canewdon	Minor Adverse	Possible impact upon the setting of the Canewdon Church Conservation Area.
CFS044	15 Southview Cl, 270 Eastwood Rd, Acacia Nurs, Ray	Neutral	No designated assets in the vicinity.
CFS045	Belchamps Scout Site, Holyoak Lane, Hawkwell	Neutral	No designated assets in the vicinity.
CFS046	Plots 37-39 Ashingdon Park Estate, Arundel Rd, Ash	Neutral	No designated assets in the vicinity.
CFS047	36 Connaught Road, Rayleigh	Neutral	No designated assets in the vicinity.
CFS048	287 Daws Heath Road, Rayleigh	Neutral	No designated assets in the vicinity.
CFS049	72 Main Road, Hawkwell	Neutral	No designated assets in the vicinity.

CFS050	Former Adult Community College, Rocheway, Rochford	Minor Adverse	Dependent on building heights and the nature of development, there may be some impact upon the setting of the Rochford Conservation Area.
CFS051	Plots 74 to 79 Fambridge Road, Ashingdon	Neutral	No designated assets in the vicinity.
CFS052	Land n of Merrifields, Lark Hill Road, Canewdon	Neutral	No designated assets in the vicinity.
CFS053	Land s of 38 and 39 Wellington Road, Rayleigh	Neutral	No designated assets in the vicinity.
CFS054	Land rear of 17 and 19 South View Close, Rayleigh	Neutral	No designated assets in the vicinity.
CFS055	Fairlawns Farm, Arterial Road, Rayleigh	Neutral	No designated assets in the vicinity.
CFS056	Stewards Yard, Wakering Road, Great Wakering	Neutral	No designated assets in the vicinity.
CFS057	Land e of Star Ln&n of Poynters Ln, Gt Wakering	Minor/Major Adverse	Large area S of Gt Wakering, the setting of the Great Wakering CA and outlying designated heritage assets on the High Street needs to be considered, although these are separated from the site by Conway Avenue. A re-appraisal of the Great Wakering CA may be needed.
CFS058	Land south of Anchor Lane, Canewdon	Minor Adverse	GII White House Farmhouse [1147616] to the west and Conewdon Church CA to the north (which includes a number of designated heritage assets) will likely have their long views likely altered, Lambourne Hall Rd and Canewdon High Street CA may not be affected but should also be considered.
CFS059	Land at Sandhill Road, Eastwood	Neutral	No designated assets in the vicinity.
CFS060	Land west of Little Wakering Road, Little Wakering	Minor Adverse	Potential impact on the setting of the church of St Mary the Virgin (GII* Church [1147397]) and its associated monuments (9, including walls, tombstones and boundary markers). GII Abbots Hall Farm [1112624] to the west also needs to have its setting assessed.
CFS062	Land n of Lambourne Hall Rd, Canewdon	Minor Adverse	Any development would need to consider the approach to the Canewdon High Street Conservation Area in their design.
CFS061	Land b/t Lambourne Hall Rd&Gardiners Ln,Canewdon	Minor Adverse	Any development would need to consider the approach to the Canewdon High Street Conservation Area in their design, which abuts the site.
CFS063	Land south of Watts Lane, Rochford	Minor Adverse	The western part of allocation would impact on the setting of a designated asset (GII 17 & 19 Southend Rd [1112560]) and the south eastern corner of the Rochford Conservation Area. Careful design could mean that part of the site could be developed.
CFS064	Land north and east of Folly Chase, Hockley	Neutral	No designated assets in the vicinity.

CFS065	Land e of Shoebury Rd&s of New Road,Gt Waking	Moderate Adverse	St Nicolas Church (GII* [1322393], plus associated GII monuments in the churchyard) and Great Waking Conservation Area are close in proximity, their setting needs to be considered.
CFS066	Circus Field, land w of Southend Road, Rochford	Neutral	No designated assets in the vicinity.
CFS067	Three Ashes, land s of Tinkers Lane, Rochford	Minor Adverse	The setting of GII 17 & 19 Southend Rd [1112560] should be considered.
CFS068	Land at Lower Wyburns Farm,s of Daws Heath Rd,Ray	Neutral	No designated assets in the vicinity.
CFS069	Land at Lower Wyburns Farm,nof Daws Heath Rd,Ray	Neutral	No designated assets in the vicinity.
CFS070	Land s of Conway Ave,w of Shoebury Rd,Gt Waking	Neutral	No designated assets in the vicinity.
CFS071	Land north of Barling Road, Barling	Neutral	View from GII Clay street [1322371] and GII Trotters [1322394] should be assessed, as well as the potential coalescing of the farmsteads.
CFS072	Land s of Cagefield Rd&e of Stambridge Rd,Stambrid	Neutral	Single designated asset in the village of Stambridge, (GII Cottage at the rear of the Post Office [1112578]) however, development between this allocation and the asset. Little impact to the setting of the listed building.
CFS073	Land nof Cagefield Rd&e of Stambridge Rd,Stambrid	Neutral	Single designated asset in the village of Stambridge, (GII Cottage at the rear of the Post Office[1112578]) however, development between this allocation and the asset. Little impact to the setting of the listed building.
CFS074	Land south of Mount Bovers Lane, Hockley	Moderate Adverse	Designated assets outside NW (GII Mount Bovers Farmhouse [1112701] and NE corner (Sweynes Farmhouse [1112698]. The setting of Mount Bovers will be negatively impacted and assessment of Sweynes Farm must occur.
CFS075	Land at Canewdon Hall Farm, Canewdon	Moderate Adverse	The western end of this allocation virtually abuts the Canewdon Church Conservation Area and will impact the setting of the GII* St Nicolas Church [1147539] and associated monuments. Redevelopment of the site could be beneficial to the setting of the church, removing the modern farm buildings but would have to be sensitively designed, retaining an agrarian and rural appearance. Any development in the eastern side of the site should consider the impact upon Canewdon High Street Conservation Area, the image on which is likely to be lesser than the affect upon the church.
CFS076	Land to the north of Sutton Road, Rochford	Minor Adverse	The setting of GII Fleet Hall [1307013] to the east should be considered.



CFS077	Land to the north of Great Wheatley Road, Rayleigh	Moderate Adverse	The setting of the three designated buildings at Great Wheatley Farm would be impacted (GII Farmhouse [1112679], GII Barn [1252995], GII Barn [1168472]). Careful master planning to ensure the setting was not impacted could facilitate the development of part of the allocation.
CFS078	Land w/Cherry Orchard Way&s/CO Ln, Rochford	Minor Adverse	The setting of 4 listed buildings at Blatches Farm to the west (GII Farmhouse [1147911] and associated barns) and designated assets in Stroud Green would need to be assessed.
CFS079	Land w/Cherry Orchard Way and e/CO Ln, Rochford	Minor Adverse	The setting of GII Rectory Cottage [1112587] and GII Pelham's Farm [1168187] will need to be taken into consideration in the masterplan.
CFS080	Land east of Cherry Orchard Way, Rochford	Neutral	GII Pelham's Farm's [1168187] setting unlikely to be impacted by this allocation.
CFS081	Land at Stroud Green, n of Hall Road, Rochford	Major Adverse	The setting of GII Pelhams Farmhouse [1168187] will be seriously impacted, development of this area would encircle the listed building. GII Rectory Cottage [1112587] may also have its setting impacted by the allocation.
CFS082	Land between Ironwell Lane & Hall Road, Hawkwell	Minor Adverse	A number of designated assets are located at a distance from the allocation site in Stroud Green. Consideration would need to be given to the setting of these assets in any master planning.
CFS083	Land south of Hall Rd&west of Ark Lane, Rochford	Minor Adverse	The setting of 4 listed buildings at Blatches Farm to the south west, designated assets in Stroud Green will need to be assessed.
CFS084	Land south of Hall Road, Rochford	Neutral	No designated assets in the vicinity however the impact of joining Stroud Green and Rochford should be considered.
CFS085	Land west&north of Rochford Hall, Hall Rd, Rochford	Major Adverse	Immediately adjacent to Rochford Hall, (GI House/Ruins [1112586], GII wall [1307122] SAM 1002200), and within the Rochford Conservation Area.
CFS086	Land b/t Rivendell&Brookside, Napier Rd, Rayleigh	Neutral	No designated assets in the vicinity.
CFS087	Land b/t Western Road&Weir Farm Road, Rayleigh	Moderate Adverse	The designated asset of GII Weir Farmhouse lies to the east of the allocation [1322351]. The setting of this asset will need to be considered in any master planning of the site.
CFS088	Land b/t The Brambles&Bo Via, Clements Hall Ln	Neutral	No designated assets in the vicinity.
CFS089	Land adjacent to Dunsmure, The Drive, Rayleigh	Neutral	No designated assets in the vicinity.

CFS090	Land s of Paglesham Road, Paglesham East End	Moderate Adverse	The allocation lies within the Paglesham Eastend Conservation Area and will have direct impact on the settings of a range of listed buildings including GII Buckland House [1112613], GII Chase Cottages [1112612] and GII The Plough and Sail Inn [1307178]. The area of green space contributes highly to the character of the Conservation Area, development will be harmful to its special interest
CFS092	Moat Farm, Chelmsford Rd, Rawreth, Wickford	Moderate Adverse	Potential impact of the setting of Witherdens Farm [1147868] to the north and non-designated moat to the south.
CFS093	Greenacres&adjacent land,Victor Gdns, Hawkwell	Moderate Adverse	The allocation lies immediately to the west and south of GII Clements Hall [1112662] within the historic park/gardens of the designated asset.
CFS094	Land west of Ash Green, Canewdon	Moderate adverse	Lies within the Canewden Conservation Area of and will impact the setting of the GII* St Nicholas Church, GII Vicarage [1147576] and associated designated monuments.
CFS095	Peggle Meadow, Southend Road, Rochford	Neutral	No designated assets in the vicinity.
CFS096	43-45 South Street, Rochford	Moderate Adverse	Within the Rochford Conservation area and immediately adjacent to a number of designated assets (particularly GII 46 South Street [1168270]). The Police Station should be considered a non-designated heritage asset, it contributes highly to the CA.
CFS097	Tithe Park, Poynters Lane, Great Wakering	Neutral	To the west is GII North Shoebury House [1112718] whose setting will not be greatly affected.
CFS098	Land north of Napier Road, Rayleigh	Neutral	No designated assets in the vicinity.
CFS099	Land west of Hullbridge	Minor Adverse	Pickerels Farm (GII Farmhouse [1147876], GII Barn [1112673]) is in the south west corner of the allocation, the setting of which will be affected. This impact will need to be minimised during master planning, perhaps by not developing the southern section of the site and removing the access from Pickerels.
CFS100	Nevendon Salvage&adj land to e, Lower Rd	Neutral	No designated assets in the vicinity.
CFS102	Land n of Eastwood Rd, e of The Drive, Rayleigh	Neutral	GII Eastwood Lodge [1306922] to the north east, however the setting of this will not be affected.



CFS103	Rosedene, Barrow Hall Road, Barling	Minor Adverse	GII Vine Cottages [1112650] to the south west which should be considered. GII Pear Tree Cottages [1322378] to the SW is unlikely to be impacted.
CFS105	Land north of Hambo Hill, Rayleigh	Neutral	No designated assets in the vicinity.
CFS106, CFS107, CFS108, CFS110	Land at Kingsway, Hullbridge	Neutral	No designated assets in the vicinity.
CFS112	Land w of Stambridge Mills, Mill Lane, Rochford	Neutral	No designated assets in the vicinity.
CFS111	Land north of Coombes Grove, Rochford	Neutral	No designated assets in the vicinity.
CFS113	Land to the east of Mill Lane, Rochford	Moderate adverse	Two designated assets to the north (GII Rose Cottage [1322414] and GII Cherry Tree PH [1112576] and two designated to the south east (GII Broomhills [1112577], GII Kennels associated with Broomhills [1168414]).
CFS114	Land r/o Cherry Tree pub, Stambridge Rd, Rochford	Moderate Adverse	Immediately to south is GII Rose Cottage [1322414] and GII Cherry Tree PH [1112576].
CFS115	Land w of Little Wakering Road, Gt Wakering	Neutral	No designated assets in the vicinity.
CFS116	Land s of Coombes Farm, Stambridge Rd, Rochford	Neutral	No impact upon nearby designated assets.
CFS117	120-122 Stambridge Road, Rochford	Neutral	No designated assets in the vicinity.
CFS118	The Paddock, Clements Hall Way, Rectory Rd, Hawkwell	Minor Adverse	Area immediately to north already developed, the GII Rectory [1322324] may be affected and should be considered.
CFS121	Land North of A127, Rayleigh	Minor Adverse	The setting of the designated complex at Great Wheatley Farm GII Farmhouse [1112679] and 2 barns [1252995, 1168472] will be impacted and should be considered.

CFS119	Land south of King George's Field, Ashingdon	Minor Adverse	Long views from GII* Church of St Andrew [1112648] should be considered.
CFS120	Land e of Kingsway&Cranleigh Gardens,Hullbridge	Neutral	No designated assets in the vicinity. Possible non-designated asset south of the site - Hanover Farm.
CFS122	N Paglesham Rd,w Waterside Rd,Paglesham East End	Moderate Adverse	Impacts both the Paglesham East End Conservation Area and the setting of three designated assets The Plough and Sail Inn [1307178], Buckland House [1112613], Chase Cottages [1113357] and a K6 Telephone Kiosk [1113357].
CFS123	1&2 Sutton Ford Cottages,Sutton Rd,Rochford	Neutral	No designated assets in the vicinity.
CFS124	Land east of Little Stambridge Hall Ln,Rochford	Minor Adverse	Immediately west of GII Rose Cottage [1322414] and Cherry Tree PH [1112578], the setting of which should be considered.
CFS126	Land north of Brays Lane, Ashingdon	Neutral	No designated assets in the vicinity.
CFS127	Eastwood Nurseries, off Bartletts, Rayleigh	Neutral	No designated assets in the vicinity.
CFS128	Land adjacent to 205 Lower Road, Hullbridge	Neutral	No designated assets in the vicinity.
CFS131	Beehive, Canewdon View Road, Rochford	Neutral	No designated assets in the vicinity.
CFS130	Lavender Lodge, Canewdon View Road, Rochford	Neutral	No designated assets in the vicinity.
CFS129	Boness, Canewdon View Road, Rochford	Neutral	No designated assets in the vicinity.
CFS132	Ivanhoe Nursery, Ironwell Lane, Hawkwell	Neutral	No designated assets in the vicinity.
CFS133	Land s of Ashingdon Rd,Ashingdon Rd,Ashingdon	Neutral	No designated assets in the vicinity.

CFS134	Land b/t Eastwood Rise&Rayleigh Ave, Eastwood	Neutral	No designated assets in the vicinity.
CFS135	Land at Flemings Farm Road, Eastwood	Neutral	No designated assets in the vicinity.
CFS136	The Dell, Madrid Avenue, Rayleigh	Minor Adverse	Setting of GII Trenders Hall [1147885] will need to be considered in design.
CFS137	Land at Hambro Nurseries, Chelmsford Rd, Rawreth	Neutral	No designated assets in the vicinity.
CFS138	Land south of Windermere Avenue, Hullbridge	Neutral	No designated assets in the vicinity.
CFS139	Land north of Hooley Drive, Rayleigh	Neutral	No designated assets in the vicinity.
CFS155	Land at Fossetts Farm, Rochford	Neutral	No designated assets in the vicinity.
CFS141	Stewards Elm Farm, Great Stambridge	Neutral	Cottage to the rear of the Post Office, a GII house [1112578] is located at road junction to east of allocation but will likely not be affected.
CFS142	Land at Barrow Hall Road, Little Wakering	Neutral	GII Abbotts Hall Farm [1112654] lies to the north east but will not be significantly impacted by such a small site.
CFS144	Land adj Chichester Hall, London Road, Rawreth	Neutral	No designated assets in the vicinity. Chichester Hall (hotel) to the north west may be a non-designated heritage asset (moated site).
CFS146	Land at Rawreth Hall Farm, Rawreth	Major Adverse	Rawreth Hall [1112675] is within the area. Development of the site will have a direct impact on the designated asset's setting.
CFS147	Land North of London Road, Rawreth	Neutral	No designated assets in the vicinity.
CFS149	Hullbridge Hill, Watery Lane, Hullbridge	Minor Adverse	The setting of GII Pickerels Farm [1147876] and associated GII Barn [1112673] to the west will need to be considered in any design.
CFS150	Land on the North side of Victor Gardens, Hockley	Minor Adverse	The setting of GII Clements Hall [1112662] must be considered. Careful design would be required to protect the setting of the designated asset.
CFS151	Long Lane, Hullbridge	Neutral	No designated assets in the vicinity.
CFS152	Cherry Hill Farm, Chelmsford Road, Rawreth	Neutral	No designated assets in the vicinity.

CFS156	Lime and Poplar Court, Greensward Lane, Hockley	Neutral	No designated assets in the vicinity.
CFS157	Sangster Court, Church Road, Rayleigh	Neutral	No designated assets in the vicinity.
CFS158	St Luke's Place, Dalys Road, Rochford	Moderate Adverse	Existing hospital building, part of which is listed [1227532] will require reuse and protection as part of any development scheme. The site is on the edge of the Rochford CA. Appropriate redevelopment, retaining the listed element may be beneficial to the setting and significance of the designated heritage assets.
CFS159	563A Ashingdon Road and land adj Chase, Rochford	Neutral	Unlikely to impact listed building to the south east, GII Rose Cottage [1322376].
CFS160	Northlands Farm, 65 High Road, Hockley	Minor Adverse	Entrance would be directly opposite designated asset (1127784) and would potentially impact setting of 4 designated assets along Bullwood Hall Lane.
CFS161	57 High Road, Hockley	Neutral	Limited potential for impact on setting of 1147784
CFS162	Land rear of 158 Rawreth Lane, Rayleigh	Minor Adverse	An assessment needs to be undertaken regarding the potential impact to GII Ashingdon Hall [1322376], south east.
CFS163	Land at Lubards Lodge Farm, Rayleigh	Neutral	No designated assets in the vicinity.
CFS164	Lubards Lodge Farm, Rayleigh	Neutral	No designated assets in the vicinity.
CFS165	Land east and west of Sutton Road, Rochford	Moderate Adverse	Grade II New Hall [1113354] is located on the northern edge of the allocation. There will be a direct impact on the designated asset's setting unless the northern parcel of land is removed.
CFS140	Old Nursery, Ironwell Lane, Hawkwell	Minor Adverse	There is the potential for some harm to the setting of GII The Old Rectory [1322324]
CFS168	Rayleigh Golf Range, Chelmsford Road, Rawreth	Neutral	No designated assets in the vicinity.
CFS153	Land West of Common Road, Great Wakering	Neutral	Access point gives views of the Great Wakering Conservation Area and the church.
CFS169	Meadowlands, Victor Gardens, Hockley	Minor Adverse	The setting of GII Clements Hall [1112662] at the south western corner would need to be considered within any master planning stage.
CFS148	Land North of Rawreth Lane, Rawreth	Moderate Adverse	GI Trender's Hall [1147885] lies on the western edge of the site. This will have a direct impact on the designated asset's setting, removing it from its agricultural landscape.
CFS170	Land North of Rawreth Lane, Rawreth	Neutral	Limited potential for impact on setting of GII Rawreth Hall Barn [1112675] and GII Trender's Hall [1147885].
CFS171	Land North of Rawreth Lane, Rawreth	Minor Adverse	The setting of GII Rawreth Hall Barn [1112675] and moated site to the south would need to be considered within any master planning stage.

CFS145	Land adj Chichester Hall, London Road, Rawreth	Neutral	No designated assets in the vicinity.
CFS166	Paglesham Church End	Moderate Adverse	Direct impact on the boundary of the Churchend Conservation Area and the range of designated assets within its boundary.
BF01	68-72 West Street, Rochford	Moderate Beneficial	Potential to improve the Rochford Conservation Area and associated setting of listed buildings within the CA boundary.
BF02	162-168 High Street, Rayleigh	Neutral	Design and layout will be important not to damage the setting of GII Rayleigh Baptist Church [1168525].
BF05	Castle Road Recycling Centre, Rayleigh	Neutral	No designated assets in the vicinity.
BF03	247 London Road, Rayleigh	Neutral	No designated assets in the vicinity.
BF07	Rear of 98 to 128 High Street, Rayleigh	Neutral	Careful design will be required if redeveloped as lies partially within Rayleigh Conservation Area.
BF14	Former Police Station, 43-45 South St, Rochford	Beneficial-moderate adverse	Careful design will be required if redeveloped as lies partially within Rochford Conservation Area and directly impacts several designated assets.
GF01	Land North West of Station, Hockley	Neutral	No designated assets in the vicinity.
COL03	Council Depot, South Street, Rochford	Neutral	No designated assets in the vicinity.
COL83	Millview Meadows, Rochford	Neutral	No designated assets in the vicinity.
COL38	Former Play Space, Malvern Road, Ashingdon	Neutral	No designated assets in the vicinity.
COL27	Freight House Car Park, Rochford	Minor Adverse	Lies within the Rochford Town Conservation Area so careful master planning will be required with early involvement of the Conservation Officer.
COL13	Freight House, Bradley Way, Rochford	Moderate Adverse-Moderate Beneficial	Lies within the Rochford Town Conservation Area and forms an original railway structure (non designated asset) so careful design will be required with early involvement of the Conservation Officer.
COL20	Rayleigh Civic Suite, Hockley Road, Rayleigh	Major Adverse	Lies within the Rayleigh Conservation Area and contains GII Barringtons [1168536].
COL7	Mill Events Centre, Bellingham Lane, Rayleigh	Moderate Adverse-Moderate Beneficial	Lies within the Rochford Town Conservation Area so careful master planning will be required with early involvement of the Conservation Officer.
CFS263	Land at Pulpits Farm, Greensward Lane, Hockley	Minor Adverse	Consideration will need to be given to the setting of GII Pulpits Farmhouse [1112649].
CFS264	Land at Greenacres Nursery, Hockley	Neutral	No designated assets in the vicinity.



WD02	66 North Street, Rochford	Neutral	Lies outside Rayleigh Conservation area and is a very small site. Unlikely to impact designated assets.
WD03	Land Opp. 100 Windermere Avenue Hullbridge	Neutral	No designated assets in the vicinity.
REF01	156 High Street Rayleigh	Neutral	No designated assets in the vicinity.
REF02	Site of 31 to 33 White Hart Lane, Hawkwell	Neutral	No designated assets in the vicinity.
WD01	61 High Street, Great Waking	Moderate Adverse	Lies within the Great Waking Conservation Area, immediately adjacent designated asset (1322391)
CFS265	Long lane, Hullbridge	Neutral	No designated assets in the vicinity.

Appendix 2

Archaeological Assessment

SHLAA_Ref	Address	Text	Comment
CFS260A	Land North of Bournes Green Chase	Neutral	No known archaeological deposits
CFS260B	Land North of Bournes Green Chase	Minor Adverse	Site contains two World War II pill boxes. Also adjacent to Listed Grade II cottages.
CFS260C	Land North of Bournes Green Chase	Neutral	No known archaeological deposits.
CFS260D	Land North of Bournes Green Chase	Minor Adverse	Cropmark of a possibly prehistoric ring ditch
CFS260F	Land North of Bournes Green Chase	Minor Adverse	Quarry Haul Road monitoring revealed archaeological features
CFS260G	Land North of Bournes Green Chase	Neutral	No known archaeological deposits
CFS260H	Land North of Bournes Green Chase	minor adverse	Adjacent to an Early Iron Age settlement excavated in 1993. Also surrounds historic farm complex at Beauchamps.
CFS260I	Land North of Bournes Green Chase	Neutral	No known archaeological deposits. Adjacent to Clay Street Farmhouse, Listed Building Grade II.
CFS260J	Land North of Bournes Green Chase	Neutral	No known archaeological deposits
CFS260K	Land North of Bournes Green Chase	Minor Adverse	Contains site of two Early Bronze Age burials and the cropmarks of an enclosure. Surround Barrow Hall Farm, Listed Grade II and moated.
CFS260L	Land North of Bournes Green Chase	Neutral	Quarry Haul Road monitoring revealed prehistoric finds
CFS260M	Land North of Bournes Green Chase	Neutral	No known archaeological deposits
CFS260N	Land North of Bournes Green Chase	Neutral	No known archaeological deposits
CFS260O	Land North of Bournes Green Chase	Neutral	No known archaeological deposits
CFS260T	Land North of Bournes Green Chase	Neutral	No known archaeological deposits. Adjacent to Abbots Hall Farmhouse Listed Grade II.
CFS260W	Land North of Bournes Green Chase	Minor Adverse	Site contains cropmarks of a possible enclosure, and find spots of prehistoric and Roman material.
CFS260X	Land North of Bournes Green Chase	Neutral	Adjacent to Roman site and site of possible enclosure, and find spots of prehistoric and Roman material.
CFS260Y	Land North of Bournes Green Chase	Neutral	No known archaeological deposits.
CFS260Z	Land North of Bournes Green Chase	Neutral	Find spot of Neolithic axe-head.
CFS260AA	Land North of Bournes Green Chase	Neutral	Adjacent to Roman site.
CFS260AB	Land North of Bournes Green Chase	Neutral	No known archaeological deposits
CFS260AC	Land North of Bournes Green Chase	Neutral	No known archaeological deposits.

CFS260AD	Land North of Bournes Green Chase	Minor Adverse	Setting of the moated site at Butlers Farm will be impacted, Site of a post-medieval house on northern edge of site.
CFS260AE	Land North of Bournes Green Chase	Neutral	No known archaeological deposits
CFS260AF	Land North of Bournes Green Chase	Neutral	No known archaeological deposits
CFS260AG	Land North of Bournes Green Chase	Neutral	No known archaeological deposits
CFS260AH	Land North of Bournes Green Chase	Moderate Adverse	Site contains Scheduled Monument NHLE 1019550 Heavy Anti-Aircraft gunsite. If the area around this is taken out of the development, it may be possible for some of the site to be developed.
CFS260AI	Land North of Bournes Green Chase	Minor Adverse	Cropmarks of linear features within the site. Also completely surrounds Fleet Hall, Listed Grade II.
CFS260AK	Land North of Bournes Green Chase	Neutral	No known archaeological deposits
CFS261	Land east of Oxford Road, Rochford	Major Adverse	Contains aerial photographic evidence of enclosures. Contains multiple buildings associated with Doggetts historic farm complex
CFS172	Land At Cracknells Farm, Hullbridge	Minor Adverse	Contains the remains of a non-designated farm recorded on earlier Ordnance Survey mapping
CFS173	Takeley, Creeksea Ferry Road, Canewdon	Neutral	No known archaeological deposits
CFS177	Land at Beeches Farm, Rawreth	Neutral	No known archaeological deposits
CFS178	Rear of Rutland, The Drive, Rayleigh	Neutral	Within a historic deer park. Prehistoric finds in the vicinity.
CFS180	Land East of Highcliff Crescent, Ashingdon	Minor Adverse	Situated south of the church and contains a WWII pill box
CFS181	The Stables, Ethel Road, Rayleigh	Neutral	Within a historic deer park. Prehistoric finds in the vicinity.
CFS182	High Gables, Rayleigh Downs Road, Rayleigh	Neutral	Within a historic deer park
CFS187	Land north of Arundel Road, Ashingdon	minor adverse	Ashingdon Historic Settlement
CFS188	Land btwn Ellesmere & Ethelbert Rd, Ashingdon	minor adverse	Ashingdon Historic Settlement
CFS190	Land south of Pooles Lane, Hullbridge	Neutral	No known archaeological deposits
CFS191	Land at Mount Bovers Lane, Hawkwell	Neutral	No known archaeological deposits
CFS192	Land west of Little Wakering Road, L. Wakering	Minor Adverse	Evidence of prehistoric occupation.
CFS193	Land south of Pooles Lane, Hullbridge	Neutral	No known archaeological deposits
CFS194	Land north of Rectory Road, Hawkwell	Minor adverse	Adjacent Clements Hall so may preserve parkland features and evidence of earlier occupation
CFS195	Land at New Hourse Farm, G. Wakering	Neutral	No known archaeological deposits.



CFS197	Land r/o 185 Greensward Lane, Hockley	Neutral	No known archaeological deposits
CFS198	Land at 195 Greensward Lane, Hockley	Neutral	No known archaeological deposits
CFS199	Land r/o 155 Greensward Lane, Hockley	Neutral	No known archaeological deposits
CFS201	Land adj 41-45 Crouch View Crescent, Hockley, Esse	Neutral	No known archaeological deposits
CFS204	Land at / r/o 139 Greensward Lane, Hockley, Essex	Neutral	No known archaeological deposits
CFS206	159 Greensward Lane, Hockley, SS5 5JH	Neutral	No known archaeological deposits
CFS207	1 Disraeli Road, Rayleigh, Essex, SS6 8XP	Neutral	Within a historic deer park. Prehistoric finds in the vicinity.
CFS212	Land at Rayleigh Downs Rd & Arterial Rd, Rayleigh	Neutral	Within a historic deer park. Prehistoric finds in the vicinity.
CFS213	Site on Apton Hall Road, Ballards Gore Golf Club	Neutral	No known archaeological deposits
CFS216	Land at Fambridge Road, Ashingdon	Minor adverse	Adjacent possible site of 11th century Battle of Assendune.
CFS217	Land at Doggetts Chase, Rochford	Neutral	No known archaeological deposits
CFS218	Land at Oxford Road, Rochford	Minor adverse	Contains a World War II pillbox.
CFS219	Ivanhoe, Ironwell Lane, Hockley, Essex, SS5 4JY	Neutral	No known archaeological deposits
CFS220, CFS031	Land at Rawreth Lane, Rayleigh	Neutral	No known archaeological deposits
CFS221	Hollowdene, Hooley Drive, Rayleigh, SS6 9RA	Neutral	No known archaeological deposits
CFS222	Land at Dollymans Farm, Doublegate Lane, Rawreth,	Minor Adverse	Prehistoric and Roman occupation within the area
CFS223	Land at Dollymans Farm, Doublegate Lane, Rawreth,	Minor adverse	Site contains cropmark of a ring ditch and finds of medieval pottery. The site of a watermill may lie within the site.
CFS224	Land at Dollymans Farm, Doublegate Lane, Rawreth,	Neutral	No known archaeological deposits
CFS225	Land at Dollymans Farm, Doublegate Lane, Rawreth,	Neutral	No known archaeological deposits
CFS226	Land at Dollymans Farm, Doublegate Lane, Rawreth,	Minor Adverse	Site contains site of Bronze Age burials excavated in route of A129.

CFS227	Land at Dollymans Farm, Doublegate Lane, Rawreth,	Minor Adverse	Site contains a cropmark of a ring ditch
CFS228	Land at Dollymans Farm, Doublegate Lane, Rawreth,	Minor Adverse	Site contains site of Bronze Age burials excavated in route of A129.
CFS229	Land at Dollymans Farm, Doublegate Lane, Rawreth,	Minor adverse	Impacts setting of moated sites at Chichester Hall and Witherdens Farm
CFS230	Land at Dollymans Farm, Doublegate Lane, Rawreth,	Neutral	No known archaeological deposits
CFS231	Land at Dollymans Farm, Doublegate Lane, Rawreth,	Minor adverse	Impacts setting of Chichester hall moated site, Finds of Roman material and site of WW II searchlight
CFS232	Land at Dollymans Farm, Doublegate Lane, Rawreth,	Neutral	No known archaeological deposits.
CFS233	Land at Battlesbridge Nursery, Chelmsford Road, Es	Neutral	No known archaeological deposits
CFS234	Appledore, Wadham Park Avenue, Hockley, SS5 6AL	Neutral	No known archaeological deposits
CFS236	Land at New Park Road, Hockley, Essex, SS5 5JX	Neutral	No known archaeological deposits
CFS237	La Mare, Wadham Park Avenue, Hockley, SS5 6AL	Neutral	No known archaeological deposits
CFS238	Shotgate Farm, London Road, Wickford (North)	Minor adverse	Historic farm complex within site
CFS239	Shotgate Farm, London Road, Wickford (South)	Neutral	No known archaeological deposits
CFS240	Old Parsonage, Ironwell Lane, Hawkwell, Essex, SS5	Neutral	No known archaeological deposits
CFS242	47 Victor Gardens, Hockley, SS5 4DS	Neutral	No known archaeological deposits
CFS243-246	Land south of Vanderbilt Avenue (Section B)	Neutral	No known archaeological deposits
CFS247	Land east of Hooley Drive, Rayleigh (Section B)	Neutral	No known archaeological deposits
CFS248-249	Land east of Hooley Drive, Rayleigh (Section A)	Neutral	No known archaeological deposits
CFS250	Land at Rayleigh Downs Road, Rayleigh, Essex, SS6	Neutral	Within an historic deer park. Prehistoric finds in the vicinity.
CFS251	Land at Peartree Cottage, Holyoak Lane, Hockley	Minor Adverse	Contains Pear Tree Cottage, marked on 1st ed OS map.



CFS255	Land at North Side of Ironwell Lane, Rochford	Neutral	No known archaeological deposits. Adjacent to multi-period site excavated to south.
CFS256	Land north of Daws Heath Road and A127, Rayleigh	Neutral	Within an historic deer park. Prehistoric finds in the vicinity.
CFS257	Land Adjacent to 130 Shoebury Road, Shoebury Road,	Neutral	No known archaeological deposits
CFS258	Site at Little Wakering Road, Little Wakering	Minor Adverse	Near historic centre of Little Wakering. Impact of setting of village core, Site of outbuilding of Castle Inn within site.
CFS259	Land at Homefield Farm, Greensward Lane, Hockley	Neutral	No known archaeological deposits
CFS262	Land at Rawal Pindi Nurseries, Hawkwell	Neutral	No known archaeological deposits
CFS001	Rayleigh Garden Centre, Eastwood Road, Rayleigh	Neutral	Within a historic deer park.
CFS002	Land b/t Rectory Rd and Hall Road, Hawkwell	Neutral	No known archaeological deposits
CFS004	Land in Little Wakering Road, Barling	Neutral	No known archaeological deposits. Adjacent to originally moated Glebe Farm Listed Grade II.
CFS003	Land at jtn The Drive and Disraeli Rd, Rayleigh	Neutral	Within a historic deer park.
CFS005	Plot 13, South west side of London Rd, Rawreth	Neutral	No known archaeological deposits
CFS006	Lane Field, Watery Lane, Hullbridge	Minor Adverse	Contains an enclosed earthwork. Lies immediately to south of multi-period site excavated around Malyons Farm.
CFS007	Rear of Golden Cross Road, Ashingdon	Neutral	No known archaeological deposits. Adjacent to Middle Bronze Age to Roman site to south.
CFS008	Land at The Chase, Ashingdon	Neutral	Located in the historic settlement of Ashingdon, potential battle site
CFS010	Roverdene, Ellesmere Road, Ashingdon	Neutral	Located in the historic settlement of Ashingdon, potential battle site
CFS011	Land b/t Victoria Dr, Seaview Dr Gt Wakering	Neutral	No known archaeological deposits
CFS012	Land East of bend, Gardiners Lane, Canewdon	Neutral	No known archaeological deposits
CFS013	Land at rear of Newton Hall Gardens, Ashingdon	minor adverse	WWII pillbox on edge of site
CFS014	Land opposite 1 to 10 Disraeli Road, Rayleigh	Neutral	Within a historic deer park.
CFS015	Land SE of Lower Rd&Hullbridge Rd jtn, Hullbridge	Neutral	Known archaeology in vicinity, nothing specific on site.

CFS016	Tyndol, Chelmsford Road, Rawreth	Neutral	No known archaeological deposits
CFS017	Greenacres, Victor Gardens, Hawkwell	Moderate Adverse	Contains site of historic park garden and outbuildings of Clement Hall, Listed Grade II.
CFS018	Land b/t The Grange & Red Roof, Ironwell Lane	Neutral	No known archaeological deposits
CFS019	Land adj to Newhall Road and Lower Road, Hockley	Neutral	No known archaeological deposits
CFS020	Land r/o St Marys Church, Rectory Rd, Hawkwell	Moderate adverse	The allocation would impact any deserted medieval settlement associated with the church as well as impact the setting of the existing building
CFS021	Land b/t Cynara&Holmfield, Canewdon Rd, Ashingdon	Neutral	No known archaeological deposits
CFS022	Meadowbrook Farm, Ironwell Lane, Rochford	Neutral	No known archaeological deposits. Adjacent to multi-period site excavated to south.
CFS023	Land north and east of Malvern Road, Hockley	Neutral	No known archaeological deposits
CFS024	Land north of Merryfields Avenue, Hockley	Neutral	No known archaeological deposits
CFS025	Land south of Montefiore Avenue, Rayleigh	Neutral	No known archaeological deposits
CFS026	Land east side of Kingsway, Hullbridge	Moderate Adverse	Situated on the site of Hanover Farm would require major excavation
CFS027	Land north of Bull Lane, Rayleigh	Neutral	No known archaeological deposits. In area classified as ancient landscape.
CFS028	Land adjacent to Brayside, Brays Lane, Rochford	Neutral	No known archaeological deposits
CFS029	Land at Turrett Farm, Napier Road, Rayleigh	Neutral	No known archaeological deposits. In area classified as ancient landscape.
CFS031	Land n of Rawreth Ln&e of Parkhurst Dr, Rayleigh	Neutral	No known archaeological deposits
CFS032	Land west of Pudsey Hall Lane, Canewdon	Neutral	No known archaeological deposits
CFS033	Land south of Pooles Lane, Hullbridge	Neutral	No known archaeological deposits
CFS034	Land adj Newhouse Farm, Poynters Ln, Gt Wakering	Neutral	Whole site is been extracted.
CFS035	Land w & n of Rochford Hall, Hall Rd, Rochford	Major Adverse	Immediately adjacent to Rochford Hall, Scheduled Monument and Listed Grade I.
CFS036	Land adj to Rectory Terrace, Rectory Rd, Hawkwell	Neutral	No known archaeological deposits

CFS037	The Ramblers & Dahlia Lodge, Eastwood Rise, Leigh	Neutral	Within Historic Deer Park
CFS038	Plots 138/139/140, Lyndhurst Rd, Ashingdon	Neutral	Within the Ashingdon historic settlement
CFS039	Plots 1/2/3 New Hall Estate, Greensward Ln, Hockley	Neutral	No known archaeological deposits
CFS040	Eastview House & Haslemere, Church Road, Hockley	Neutral	No known archaeological deposits
CFS041	La Vallee Farm, Lower Road, Hockley	Neutral	No known archaeological deposits
CFS042	Tower Farm, Lower Road, Hullbridge	Neutral	No known archaeological deposits
CFS043	Bolt Hall Farm, Lark Hill Road, Canewdon	Minor Adverse	Site of a windmill and potentially other medieval or post medieval occupation.
CFS044	15 Southview Cl, 270 Eastwood Rd, Acacia Nurs, Ray	Neutral	Within historic deer park
CFS045	Belchamps Scout Site, Holyoak Lane, Hawkwell	Minor Adverse	Contains sites of former houses south of Holyoak Lane. Will need archaeological investigation.
CFS045	Belchamps Scout Site, Holyoak Lane, Hawkwell	Neutral	No known archaeological deposits
CFS046	Plots 37-39 Ashingdon Park Estate, Arundel Rd, Ash	Neutral	Within the Ashingdon historic settlement
CFS047	36 Connaught Road, Rayleigh	Neutral	Within Historic Deer Park
CFS048	287 Daws Heath Road, Rayleigh	Neutral	Within Historic Deer Park
CFS049	72 Main Road, Hawkwell	Neutral	No known archaeological deposits
CFS050	Former Adult Community College, Rocheway, Rochford	Neutral	No known archaeological deposits, Adjacent to a Middle Bronze Age to Late Iron Age site.
CFS051	Plots 74 to 79 Fambridge Road, Ashingdon	Neutral	Within the historic settlement area of Ashingdon
CFS052	Land n of Merrifields, Lark Hill Road, Canewdon	Neutral	No known archaeological deposits
CFS053	Land s of 38 and 39 Wellington Road, Rayleigh	Neutral	No known archaeological deposits. In area classified as ancient landscape.
CFS054	Land rear of 17 and 19 South View Close, Rayleigh	Neutral	Within historic deer park
CFS055	Fairlawns Farm, Arterial Road, Rayleigh	Neutral	No known archaeological deposits

CFS056	Stewards Yard, Waking Road, Great Waking	Neutral	Parts of site extracted, no known deposits
CFS057	Land e of Star Ln&n of Poynters Ln, Gt Waking	Neutral	Most of the site has been extracted. Archaeological finds and features from within area may indicate the possibility of finds from the unexcavated areas of this site.
CFS058	Land south of Anchor Lane, Canewdon	Neutral	Close proximity to prehistoric occupation.
CFS059	Land at Sandhill Road, Eastwood	Neutral	Within historic deer park
CFS060	Land west of Little Waking Road, Little Waking	Minor Adverse	Cropmark of a possibly prehistoric ring ditch and potential for medieval development associated with the church to the east
CFS062	Land n of Lambourne Hall Rd, Canewdon	Minor Adverse	Site of WW II radar station
CFS061	Land b/t Lambourne Hall Rd&Gardiners Ln,Canewdon	Minor Adverse	Potential medieval settlement associated to Canewden
CFS063	Land south of Watts Lane, Rochford	Neutral	No known archaeological deposits.
CFS064	Land north and east of Folly Chase, Hockley	Minor Adverse	Historic Site of Bluehouse Farm within area.
CFS065	Land e of Shoebury Rd&s of New Road,Gt Waking	Neutral	No known archaeological deposits. Roman finds in the vicinity.
CFS066	Circus Field, land w of Southend Road, Rochford	Minor Adverse	Adjacent to Prehistoric site at Southend Airport.
CFS067	Three Ashes, land s of Tinkers Lane, Rochford	Minor Adverse	Contains site of World War II Light Anti-Aircraft battery and ammunition shelter, and find spot of Mesolithic-Neolithic jet beads.
CFS068	Land at Lower Wyburns Farm,s of Daws Heath Rd,Ray	Neutral	Includes Wyburns Farm, marked on 1st ed OS map. On edge of deer park
CFS069	Land at Lower Wyburns Farm,nof Daws Heath Rd,Ray	Neutral	Within Historic Deer Park
CFS070	Land s of Conway Ave,w of Shoebury Rd,Gt Waking	Neutral	No known archaeological deposits. Archaeological finds and features from surrounding area.
CFS071	Land north of Barling Road, Barling	Neutral	No known archaeological deposits
CFS072	Land s of Cagefield Rd&e of Stambridge Rd,Stambrid	Minor Adverse	Potential multi-period site. Various finds of Iron Age, Roman, Saxon and medieval date.
CFS073	Land nof Cagefield Rd&e of Stambridge Rd,Stambrid	Neutral	Cropmarks of linear features.
CFS074	Land south of Mount Bovers Lane, Hockley	Neutral	No known archaeological deposits.
CFS075	Land at Canewdon Hall Farm, Canewdon	Moderate adverse	Close to the historic core of Canewden and its church hall complex. Impact on present conservation area and standing buildings.

CFS076	Land to the north of Sutton Road, Rochford	Neutral	No known archaeological deposits
CFS077	Land to the north of Great Wheatley Road, Rayleigh	Neutral	No known archaeological deposits.
CFS078	Land w/Cherry Orchard Way&s/CO Ln, Rochford	Neutral	No known archaeological deposits. Iron Age and Roman site lies to the south.
CFS079	Land w/Cherry Orchard Way and e/CO Ln, Rochford	Minor Adverse	Evidence of potential Roman settlement
CFS080	Land east of Cherry Orchard Way, Rochford	Minor Adverse	Evidence of potential Roman settlement
CFS081	Land at Stroud Green, n of Hall Road, Rochford	Neutral	No known archaeological deposits. Adjacent to Pelhams Farmhouse, Listed Grade II.
CFS082	Land between Ironwell Lane & Hall Road, Hawkwell	Minor Adverse	Contains site of WWII Heavy Anti-aircraft gunsite and associated floodlight. Large site needs archaeological assessment.
CFS083	Land south of Hall Rd & west of Ark Lane, Rochford	Neutral	Adjacent to site of a post-medieval brick kiln.
CFS084	Land south of Hall Road, Rochford	Minor Adverse	Contains site of late medieval gatehouse to the Glebe
CFS085	Land west & north of Rochford Hall, Hall Rd, Rochford	Major Adverse	Immediately adjacent to Rochford Hall, Scheduled Monument and Listed Grade I.
CFS086	Land b/t Rivendell&Brookside, Napier Rd, Rayleigh	Neutral	No known archaeological deposits
CFS087	Land b/t Western Road&Weir Farm Road, Rayleigh	Neutral	No known archaeological deposits
CFS088	Land b/t The Brambles&Bo Via, Clements Hall Ln	Neutral	No known archaeological deposits
CFS089	Land adjacent to Dunsmure, The Drive, Rayleigh	Neutral	Within historic Deer Park
CFS090	Land s of Paglesham Road, Paglesham East End	Moderate Adverse	Site within historic settlement of Paglesham East End.
CFS092	Moat Farm, Chelmsford Rd, Rawreth, Wickford	Moderate Adverse	Contains a medieval moat which will preserve medieval remains in the centre platform.

CFS093	Greenacres&adjacent land,Victor Gdns, Hawkwell	Moderate Adverse	Contains site of historic gardens and outbuildings of Clement Hall, Listed Grade II.
CFS094	Land west of Ash Green, Canewdon	Minor Adverse	Allocation lies within the Conservation Area likely to have archaeological deposits associated with the historic church and hall complex.
CFS095	Peggle Meadow, Southend Road, Rochford	Minor Adverse	Contains Roman site excavated 1977 to 1979. Further archaeological deposits will survive in unexcavated areas.
CFS096	43-45 South Street, Rochford	Moderate adverse	In conservation area and extent of historic town. Important above and below ground assets likely to be present.
CFS097	Tithe Park, Poynters Lane, Great Wakering	Neutral	Most of the site has been quarried.
CFS098	Land north of Napier Road, Rayleigh	Neutral	No known archaeological deposits. In area classified as ancient landscape.
CFS099	Land west of Hullbridge	Minor Adverse	Prehistoric settlement evidence in foreshore on the northern boundary
CFS100	Nevendon Salvage&adj land to e, Lower Rd	Neutral	Adjacent to moated site. Setting of the moat will need to be considered
CFS102	Land n of Eastwood Rd, e of The Drive, Rayleigh	Neutral	Within historic deer park
CFS103	Rosedene, Barrow Hall Road, Barling	Neutral	No known archaeological deposits
CFS105	Land north of Hambo Hill, Rayleigh	Minor Adverse	Multi-period find recorded from the area
CFS106, CFS107, CFS108, CFS110	Land at Kingsway, Hullbridge	Neutral	No known archaeological deposits
CFS112	Land w of Stambridge Mills, Mill Lane, Rochford	Minor Adverse	Multi-period deposits enclosing the allocation site.
CFS111	Land north of Coombes Grove, Rochford	Neutral	No known archaeological deposits



CFS113	Land to the east of Mill Lane, Rochford	Minor adverse	Multi-period deposits enclosing the allocation site.
CFS114	Land r/o Cherry Tree pub, Stambridge Rd, Rochford	Neutral	No known archaeological deposits. Adjacent to two Listed Buildings.
CFS115	Land w of Little Wakering Road, Gt Wakering	Neutral	No known archaeological deposits
CFS116	Land s of Coombes Farm, Stambridge Rd, Rochford	Minor Adverse	Previous evaluation on this site has shown finds and features of Middle Bronze Age to Late Iron Age date. Further archaeological excavation will be required.
CFS117	120-122 Stambridge Road, Rochford	Neutral	No known archaeological deposits
CFS118	The Paddock, Clements Hall Way, Rectory Rd, Hawkwell	Neutral	No known archaeological deposits
CFS121	Land North of A127, Rayleigh	Neutral	No known archaeological deposits.
CFS119	Land south of King George's Field, Ashingdon	Neutral	No known archaeological deposits
CFS120	Land e of Kingsway & Cranleigh Gardens, Hullbridge	Neutral	No known archaeological deposits
CFS122	N Paglesham Rd, w Waterside Rd, Paglesham East End	Neutral	No known archaeological deposits
CFS123	1&2 Sutton Ford Cottages, Sutton Rd, Rochford	Neutral	No known archaeological deposits
CFS124	Land east of Little Stambridge Hall Ln, Rochford	Neutral	No known archaeological deposits
CFS126	Land north of Brays Lane, Ashingdon	Neutral	No known archaeological deposits. Adjacent to Middle Bronze Age to Roman site to south.
CFS127	Eastwood Nurseries, off Bartletts, Rayleigh	Neutral	Within historic deer park
CFS128	Land adjacent to 205 Lower Road, Hullbridge	Neutral	No known archaeological deposits



CFS131	Beehive, Canewdon View Road, Rochford	Neutral	No known archaeological deposits
CFS130	Lavender Lodge, Canewdon View Road, Rochford	Neutral	No known archaeological deposits
CFS129	Boness, Canewdon View Road, Rochford	Neutral	No known archaeological deposits
CFS132	Ivanhoe Nursery, Ironwell Lane, Hawkwell	Neutral	No known archaeological deposits
CFS133	Land s of Ashingdon Rd,Ashingdon	Minor Adverse	Cropmarks within area. Adjacent to site of a WWII pillbox (destroyed).
CFS134	Land b/t Eastwood Rise&Rayleigh Ave, Eastwood	Neutral	Within historic deer park
CFS135	Land at Flemings Farm Road, Eastwood	Neutral	No known archaeological deposits
CFS136	The Dell, Madrid Avenue, Rayleigh	Neutral	No known archaeological deposits. Adjacent to site of Roman farmstead and impacts setting of moated site to east.
CFS137	Land at Hambro Nurseries,Chelmsford Rd,Rawreth	Neutral	No known archaeological deposits
CFS138	Land south of Windermere Avenue, Hullbridge	Minor Adverse	Multi-period archaeological deposits excavated to the east but extending into the allocation site.
CFS139	Land north of Hooley Drive, Rayleigh	Neutral	No known archaeological deposits
CFS155	Land at Fossetts Farm, Rochford	Minor Adverse	Setting of the scheduled Prittlewell Camp will need to be considered, Site of a post-medieval house on northern edge of site.
CFS141	Stewards Elm Farm, Great Stambridge	Minor Adverse	Site includes historic Stewards Elm Farm, shown on 1st ed OS map.
CFS142	Land at Barrow Hall Road, Little Wakering	Minor Adverse	Includes site of Bridgmans on the first edition OS maps
CFS144	Land adj Chichester Hall, London Road, Rawreth	Minor Adverse	Setting of adjacent moated site needs to be considered.

CFS146	Land at Rawreth Hall Farm, Rawreth	Moderate Adverse	Site of a Roman farmstead found as part of an evaluation. Site encircles a moated farm complex
CFS147	Land North of London Road, Rawreth	Minor Adverse	Contains cropmarks of enclosures.
CFS149	Hullbridge Hill, Watery Lane, Hullbridge	Minor Adverse	Extensive archaeological deposits to the east which will extend into this allocation area
CFS150	Land on the North side of Victor Gardens, Hockley	Neutral	No known archaeological deposits
CFS151	Long Lane, Hullbridge	Neutral	No known archaeological deposits
CFS152	Cherry Hill Farm, Chelmsford Road, Rawreth	Neutral	No known archaeological deposits
CFS156	Lime and Poplar Court, Greensward Lane, Hockley	Neutral	No known archaeological deposits
CFS157	Sangster Court, Church Road, Rayleigh	Neutral	Within historic deer park
CFS158	St Luke's Place, Dalys Road, Rochford	Minor Adverse	Contains Rochford Hospital Main block, Listed Grade II.
CFS159	563A Ashingdon Road and land adj Chase, Rochford	Neutral	Within historic settlement of Ashindon
CFS160	Northlands Farm, 65 High Road, Hockley	Minor adverse	Partially in area classified as ancient landscape.
CFS161	57 High Road, Hockley	Neutral	No known archaeological deposits
CFS162	Land rear of 158 Rawreth Lane, Rayleigh	Neutral	No known archaeological deposits
CFS163	Land at Lubards Lodge Farm, Rayleigh	Neutral	No known archaeological deposits
CFS164	Lubards Lodge Farm, Rayleigh	Minor Adverse	Contains Lubards Lodge, historic site shown on 1st ed OS.
CFS165	Land east and west of Sutton Road, Rochford	Minor Adverse	Find of a Neolithic axe-head, and a World War II pill box. Impacts historic farms of temple Farm and New Hall.
CFS140	Old Nursery, Ironwell Lane, Hawkwell	Neutral	No known archaeological deposits
CFS168	Rayleigh Golf Range, Chelmsford Road, Rawreth	Neutral	No known archaeological deposits
CFS153	Land West of Common Road, Great Wakering	Neutral	No known archaeological deposits. Prehistoric and Roman finds in the vicinity.
CFS169	Meadowlands, Victor Gardens, Hockley	Neutral	No known archaeological deposits
CFS148	Land North of Rawreth Lane, Rawreth	Moderate Adverse	Adjacent to site of Roman farmstead and moated Trenders Hall, Listed Grade II. Significant impact on setting of moat
CFS170	Land North of Rawreth Lane, Rawreth	Neutral	No known archaeological deposits. Adjacent to site of Roman farmstead.
CFS171	Land North of Rawreth Lane, Rawreth	Neutral	No known archaeological deposits

CFS145	Land adj Chichester Hall, London Road, Rawreth	Neutral	No known archaeological deposits
CFS166	Paglesham Church End	Moderate adverse	Site is opposite the medieval village extent with Listed buildings including the church, Grade II* and dating from the 12th century.
BF01	68-72 West Street, Rochford	Minor Adverse	Immediately adjacent to medieval town extent. May preserve evidence of medieval activity.
BF02	162-168 High Street, Rayleigh	Neutral	No known archaeological deposits
BF05	Castle Road Recycling Centre, Rayleigh	Neutral	No known archaeological deposits. Adjacent to find spot of a small Roman vase.
BF03	247 London Road, Rayleigh	Neutral	No known archaeological deposits
BF07	Rear of 98 to 128 High Street, Rayleigh	Minor Adverse	Part of site is within medieval town extent and in conservation area
BF14	Former Police Station, 43-45 South St, Rochford	Minor Adverse	Within the medieval town and conservation area.
GF01	Land North West of Station, Hockley	Neutral	No known archaeological deposits
COL03	Council Depot, South Street, Rochford	Minor Adverse	Contains historic sewage works and is on the river frontage of historic town.
COL83	Millview Meadows, Rochford	Neutral	No known archaeological deposits
COL38	Former Play Space, Malvern Road, Ashingdon	Neutral	No known archaeological deposits
COL27	Freight House Car Park, Rochford	Minor Adverse	Surrounds important non designated asset within the conservation area of Rochford
COL13	Freight House, Bradley Way, Rochford	Minor Adverse	Surrounds important non designated asset within the conservation area of Rochford. Building should be retained
COL20	Rayleigh Civic Suite, Hockley Road, Rayleigh	Minor adverse	Within medieval town extent. Will need archaeological investigation.
COL7	Mill Events Centre, Bellingham Lane, Rayleigh	Moderate Adverse	Within medieval town extent. Impacts the scheduled Monument of Mott and Bailey.
CFS263	Land at Pulpits Farm, Greensward Lane, Hockley	Neutral	No known archaeological deposits
CFS264	Land at Greenacres Nursery, Hockley	Neutral	No known archaeological deposits
WD02	66 North Street, Rochford	Neutral	No known archaeological deposits
WD03	Land Opp. 100 Windermere Avenue Hullbridge	Minor Adverse	Multi-period archaeological deposits excavated to the east but extending into the allocation site.
REF01	156 High Street Rayleigh	Neutral	No known archaeological deposits
REF02	Site of 31 to 33 White Hart Lane, Hawkwell	Neutral	No known archaeological deposits
WD01	61 High Street, Great Wakering	Neutral	No known archaeological deposits



	Neutral	No known archaeological deposits
--	---------	----------------------------------

DRAFT